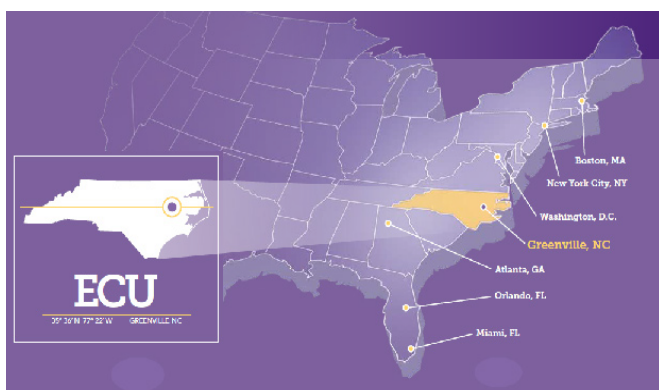


Intensive Academic English with East Carolina University® Language Academy

Who are our students?

The Intensive English Program at ECULA welcomes everyone. Students are a mix of:

- Those with and without intention of studying in a degree program after ECULA. It is not, however, intended for casual study or conversational English.
- Traditional university entrance age to mid-professionals whose families join them in the US as dependents.
- Those who are new to the US and local community members.



Where are we located?

ECU Language Academy is located on ECU's Main Campus in Greenville, North Carolina, USA. This setting offers the classic American university experience. ECU's suburban campus is ideal for balance between feeling supported and access to large city amenities and attractions.

Greenville is 1.5 hours drive from North Carolina's state capital of Raleigh to the west and 1.5 hours drive from the famous Atlantic and Outer Banks beaches to the east. Midway between New York City and Miami, Greenville is only 440 kilometers from Washington, DC.

How is the program structured?

Instruction hours per week: 22

Class schedule: 8:00 to 16:00 every day Monday through Thursday

Number of levels: 3

- Beginner
- Intermediate
- Advanced

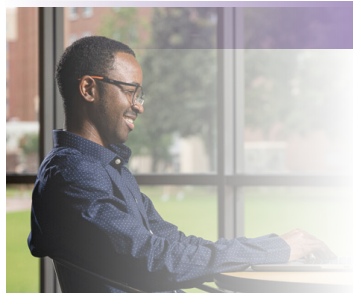
Subjects: Each level has Reading, Writing, Grammar, Listening/Speaking

Delivery method: All classes are in-person

Average class size: 7-9 students



What is included in the program?



Tuition and fees include:

- Class tuition
- All textbooks
- Access to ECU campus facilities
- Health insurance

ECU facilities include:

- Full university library
- Student Health Services
- Recreation Center
- ECU transit
- ECU Speech Lab

Why should you choose ECULA?

Accredited

The Intensive Academic English program as ECULA is proud to be accredited through the Commission on English Language Program Accreditation (CEA) and the Southern Association of Colleges and Schools Commission on Colleges (SACSCOC).

Supportive Faculty and Staff

Dedicated faculty and staff with holistic advising and support.

University preparation

- All of your instructors have at least a Master's degree.
- Average GPA for matriculated students: 3.25 out of 4.0
- Degree programs matriculated have entered: Business, Construction Management, Public Administration, English Education, International Studies



East Carolina University® Language Academy

Applying to the Intensive Academic English Program

1 SUBMIT YOUR ONLINE APPLICATION AND APPLICATION FEE

Required Steps

1. You must submit an application. Account creation is not sufficient.
2. Create an account at internationalapply.ecu.edu.
3. Activate your account when you receive the activation email.
4. Log into your account and start a new international application.
5. Answer all the questions and pay the fee. We do not offer fee waivers.

2 SUBMIT YOUR ACADEMIC RECORDS

Required Steps

- Under 18 years of age: copies of highest/most recent academic records should be emailed to international@ecu.edu.
- Over 18 years of age: no records required

3 Once you have submitted all of the above, your application is reviewed. If offered admission, you will APPLY FOR YOUR STUDENT VISA

Required Steps

1. You submit your Confidential Financial Information Form and financial documents to ECULA.
2. We send you the document required to book your student visa interview with the US consulate or embassy near you.
3. You attend your student visa interview with the US Department of State and the US Consulate or Embassy. The US consular office provides you an outcome.

4 SUBMIT YOUR ONLINE APPLICATION AND APPLICATION FEE

There are no grants, loans, or scholarships from ECU to study at ECU Language Academy. Below are estimated costs based on the minimum number of terms to complete the program.

You place into:	Advanced (1 term)	Intermediate (2 terms)	Beginner (3 terms)
	Tuition and fees: \$5,900 USD Estimated living: \$7,613 USD Total: \$13,513 USD	Tuition and fees: \$11,800 USD Estimated living: \$15,226 USD Total: \$27,026 USD	Tuition and fees: \$17,700 USD Estimated living: \$22,839 USD Total: \$40,539 USD

FREQUENTLY ASKED QUESTIONS: Intensive Academic English at ECULA

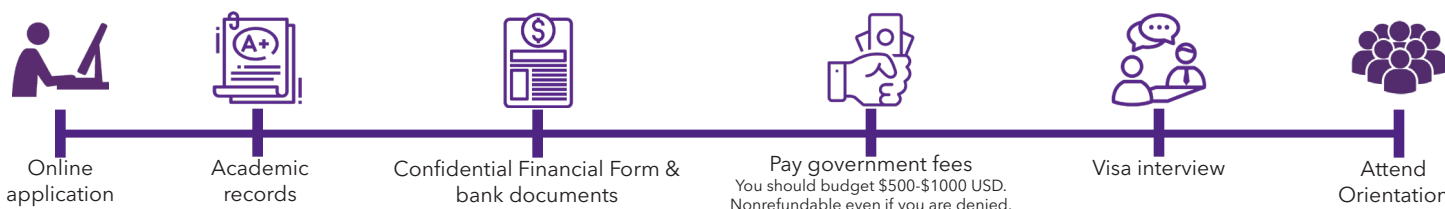
Can I work while studying in ECULA?
No, US federal law does not allow intensive English students to work while studying.

Do you have a deadline?
There is no deadline, but we advise applying no less than 100 days before the start of a term.

How much is required for immigration paperwork?
We must expenses for one (1) term: \$11,077 USD.

When can I start classes?
Students can begin in August (fall term) or January (spring term).

How can I get in touch? WhatsApp: +1 252 737 5412 | Email: international@ecu.edu | Phone: +1 252 737 4378



UNDERSTANDING CONDITIONAL ADMISSION

General things to know

- Conditional admission is for students who want to study in a degree program but do not meet the English proficiency requirements for admission directly into a degree program.
- Intensive English is not free for students offered conditional admission.
- You must show that you can afford your degree program before beginning degree classes.
- ECULA students are not officially accepted into an ECU degree until successful completion of the Advanced Level or attainment of admission requirements.

Undergraduate Programs

- Applicants wanting to study for an undergraduate (bachelor) degree but do not meet the English requirements, apply for intensive English, on the application indicate you want conditional admission, and email copies of your academic records to international@ecu.edu.

Graduate Programs

- Applicants wanting to study for a Master's or PhD degree should follow the Graduate School's conditional admission process, including a formal application to the program of choice.
- Not all programs will consider conditional admission offers, and this decision is at the discretion of the program.
- Applying for conditional admission does not waive any other application requirements, including statements of purpose or standardized test scores.
- You can also follow these instructions to apply to a graduate program while studying English.